

4

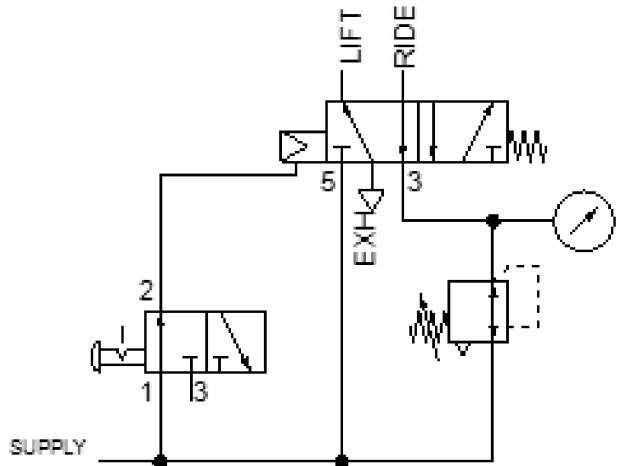
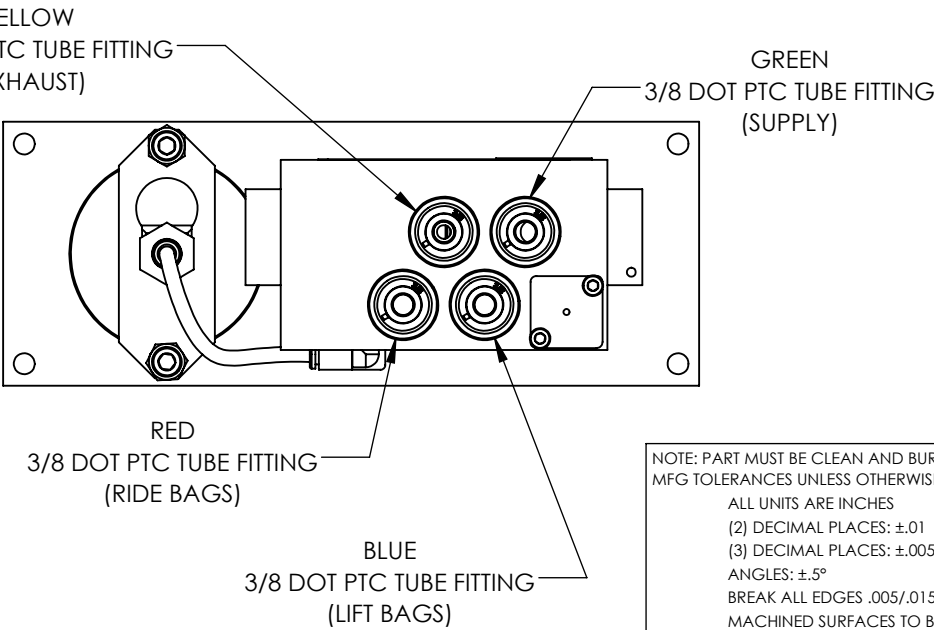
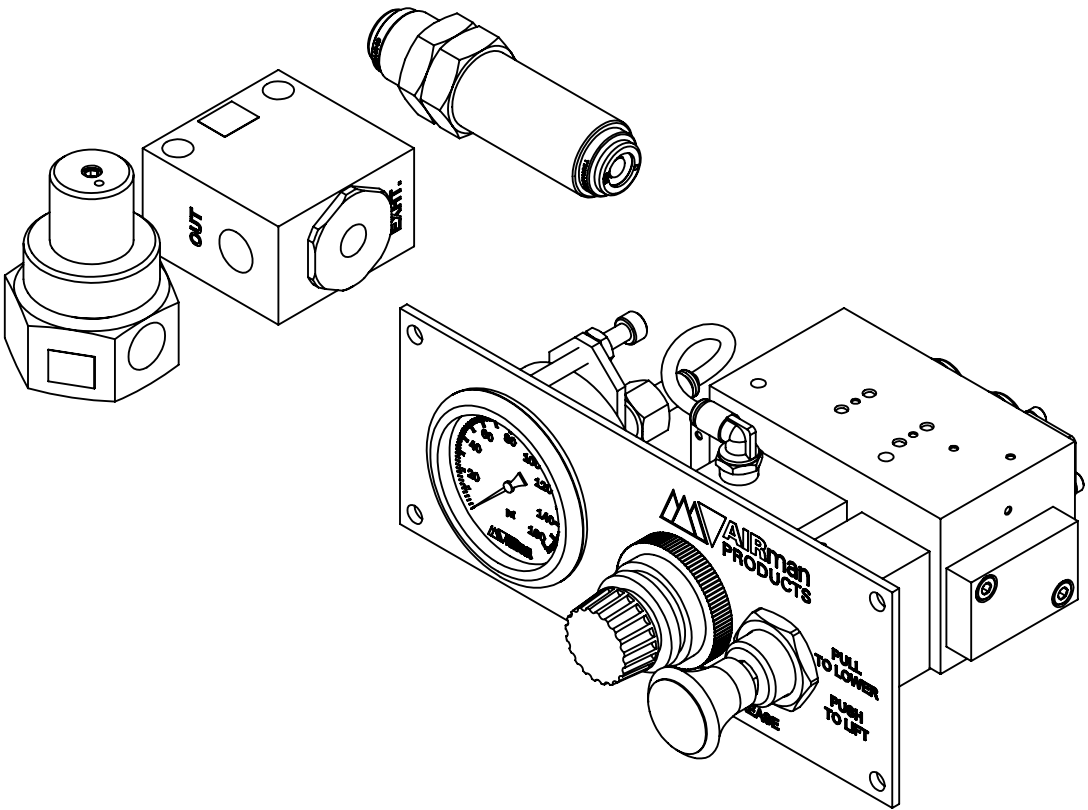
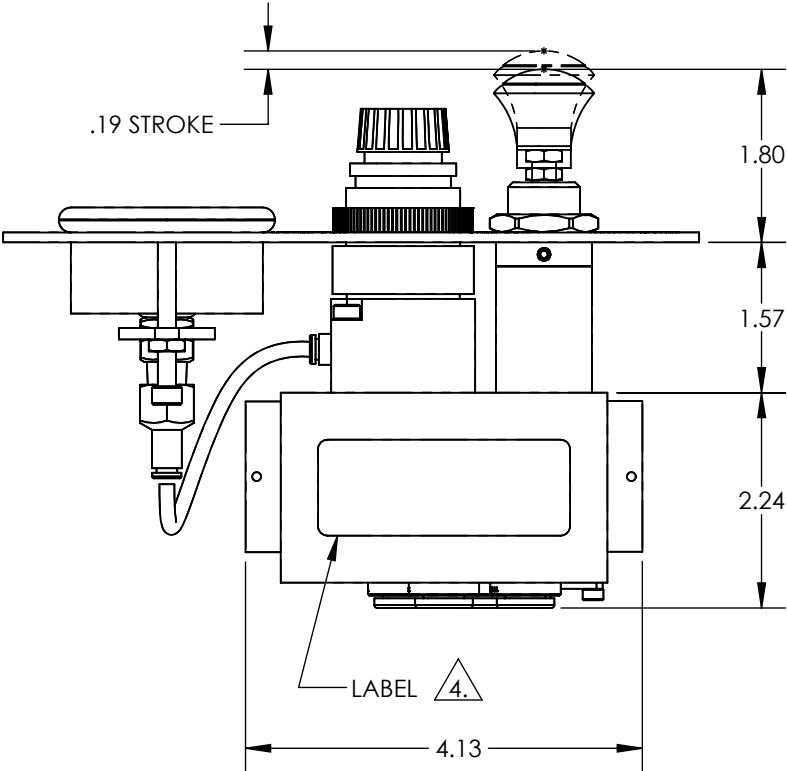
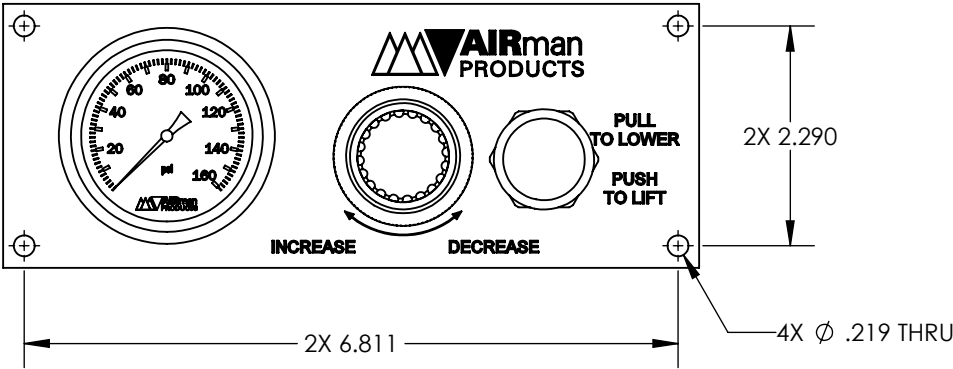
3

2

1

- NOTES:
- 1. APPLICABLE STANDARDS/SPECIFICATIONS:
ASME Y14.5M-1994, DIMENSIONING AND TOLERANCING
ASME Y14.38-1999, ABBREVIATIONS
 - 2. COMPONENT OR ITEM TO BE COMPLIANT WITH THE MOST
CURRENT REVISION OF THE RoHS / Wee DIRECTIVE FOR
THE REDUCTION OF HAZARDOUS SUBSTANCES AND MATERIALS.
 - 3.
 - 4. LABEL ORIENTATION SHOWN UPSIDE DOWN IN VIEW.

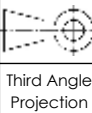
REV	DATE	EC #	ZONE	DESCRIPTION	DRAWN	CKD
A	2019-12-24			ORIGINATED	JMA/NR	CED



FUNCTION	AIR CONTROL KIT FOR LIFT AXLE WITH REGULATED RIDE. NON-STEERABLE INSIDE MOUNTED (NSI)	
MECHANICAL MATERIALS	ALUMINUM BODY & NYLON KNOB	
SEALS	LOW TEMP. NITRILE AND LOW COMP. SET POLYURETHANE	
FASTENERS	STAINLESS STEEL	
MTG STYLE	INSIDE BRACKET MOUNT	
ASSY LUBRICATION	HEAVY TRANSPORT SILICONE	
FLOW	N/A	
TEMP	-40 TO 180°F	
FILTRATION	40 MICRON RECOMMENDED	
SYSTEM LUBRICATION REQ'D	N/A	
PRESSURE RANGE	MIN: 60 PSI MAX: 150 PSI	
LEAK	MAX: 30 SCCM	
ELECTRICAL VOLTAGE	N/A	
CURRENT	N/A	

CUSTOMER PRINT

NOTE: PART MUST BE CLEAN AND BURR FREE
MFG TOLERANCES UNLESS OTHERWISE NOTED:
ALL UNITS ARE INCHES
(2) DECIMAL PLACES: ±.01
(3) DECIMAL PLACES: ±.005
ANGLES: ±.5°
BREAK ALL EDGES .005/.015 X 45°
MACHINED SURFACES TO BE 63 RMS
CRITICAL CHARACTERISTIC - CONTROL
PLAN REQUIRED



CONFIDENTIAL: THIS DRAWING OR ANY PART THEREOF IS PROPRIETARY AND MAY NOT BE REPRODUCED OR COPIED WITHOUT WRITTEN CONSENT OF AIRMAN PRODUCTS

DRAWN BY	NR	DESCRIPTION
DRAWN DATE	2019-12-24	VALVE ASSY, (NSI) LIFT AXLE KIT
DRAWING SIZE	B	
MATERIAL	SEE NOTES	PART NUMBER
SCALE	1:2	B2400-B03 (NSI)
SHEET #	1 OF 1	