

4

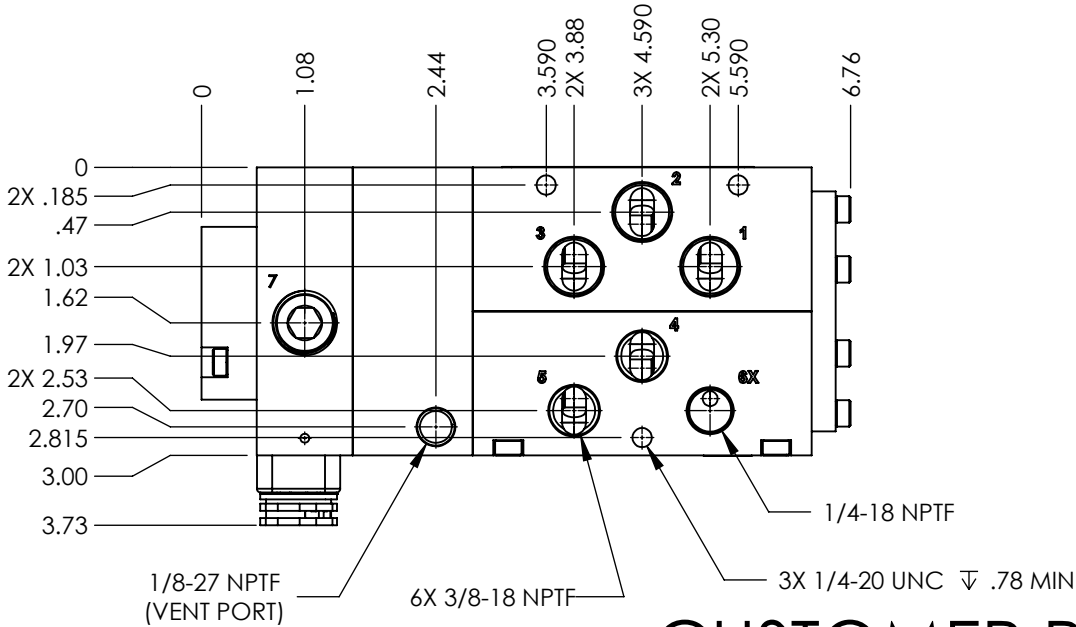
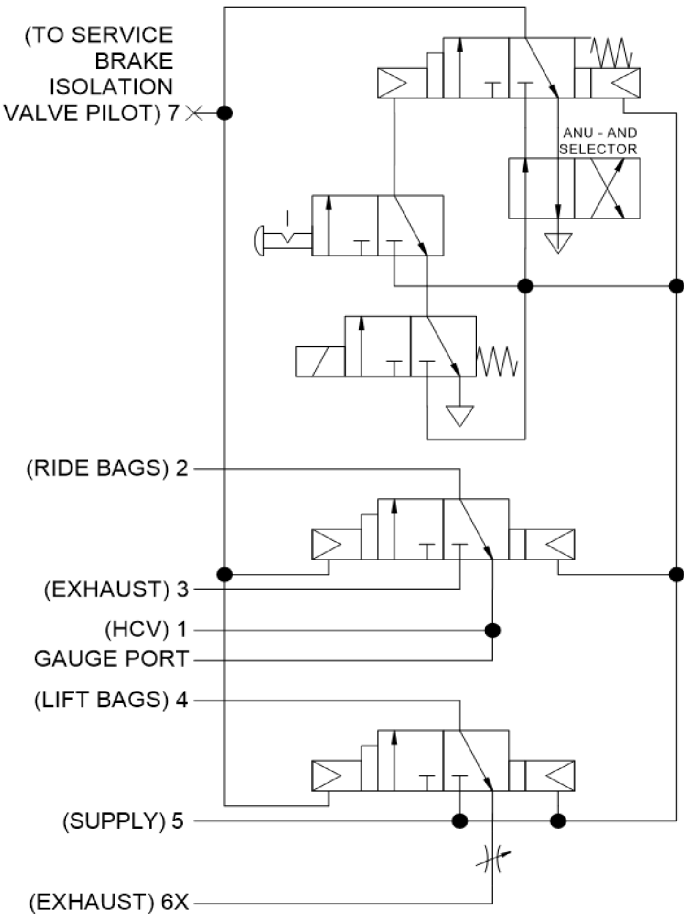
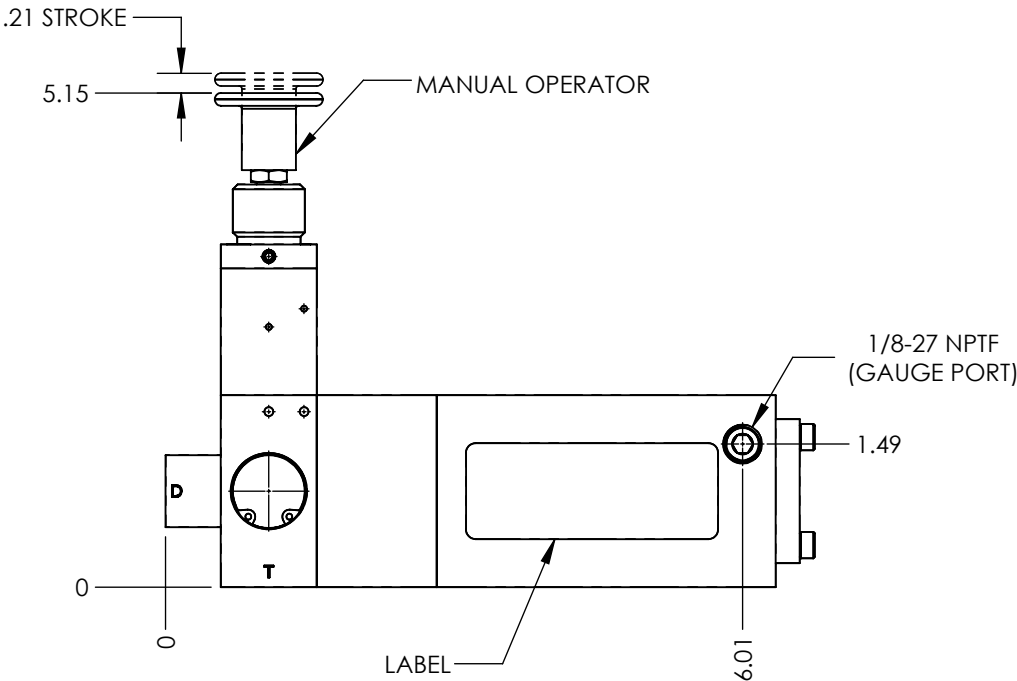
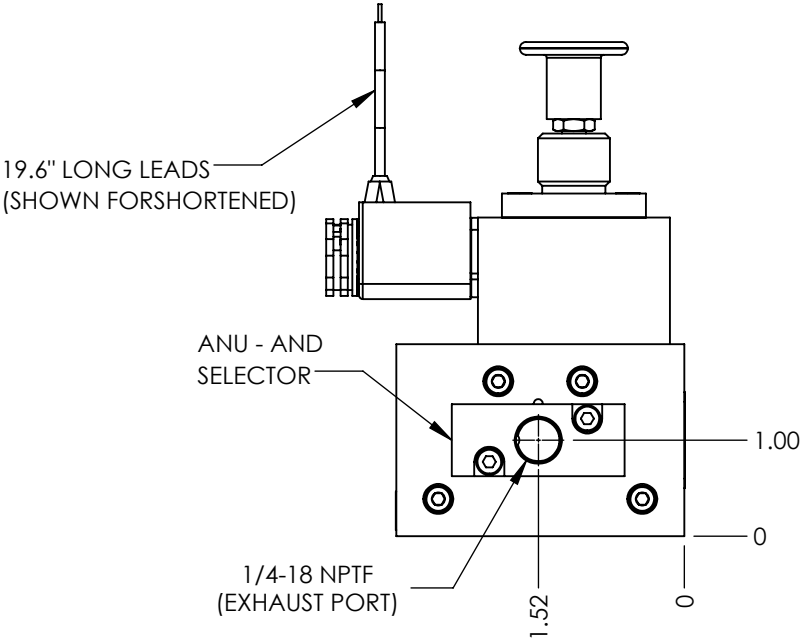
3

2

1

- NOTES:
1. APPLICABLE STANDARDS/SPECIFICATIONS:
ASME Y14.5M-1994, DIMENSIONING AND TOLERANCING
ASME Y14.38-1999, ABBREVIATIONS
 2. COMPONENT OR ITEM TO BE COMPLIANT WITH THE MOST
CURRENT REVISION OF THE RoHS / Wee DIRECTIVE FOR
THE REDUCTION OF HAZARDOUS SUBSTANCES AND MATERIALS.
 3. ALL DIMENSIONS ARE FOR REFERENCE ONLY.

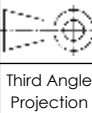
REV	DATE	EC #	ZONE	DESCRIPTION	DRAWN	CKD
A	2020-07-18			ORIGINATED	NR	JMA



FUNCTION	LIFT AXLE CONTROLS
MECHANICAL MATERIALS	ALUMINUM BODY & END CAP
SEALS	LOW TEMP, NITRILE, LOW COMP. SET POLYURETHANE
FASTENERS	STAINLESS STEEL
MTG STYLE	PANEL OR BODY SIDE
ASSY LUBRICATION	HEAVY TRANSPORT SILICONE
FLOW	N/A
TEMP	-40 TO 180°F
FILTRATION	40 MICRON
SYSTEM LUBRICATION REQ'D	N/A
PRESSURE RANGE	MIN: 60 psi MAX: 150 psi PILOT: N/A
LEAK	<90 SCCM @ 120psi
ELECTRICAL VOLTAGE	12 VDC
CURRENT	5 WATTS FLYING LEADS

CUSTOMER PRINT

NOTE: PART MUST BE CLEAN AND BURR FREE
MFG TOLERANCES UNLESS OTHERWISE NOTED:
ALL UNITS ARE INCHES
(2) DECIMAL PLACES: ±.01
(3) DECIMAL PLACES: ±.005
ANGLES: ±.5°
BREAK ALL EDGES .005/.015 X 45°
MACHINED SURFACES TO BE 63 RMS
CRITICAL CHARACTERISTIC - CONTROL
PLAN REQUIRED



CONFIDENTIAL: THIS DRAWING OR
ANY PART THEREOF IS PROPRIETARY
AND MAY NOT BE REPRODUCED OR
COPIED WITHOUT WRITTEN CONSENT
OF AIRMAN PRODUCTS

DRAWN BY	NR	DESCRIPTION
DRAWN DATE	2020-07-18	LIFT AXLE CTRL, X OVER L TO R, NO REG
DRAWING SIZE	B	
MATERIAL	SEE NOTES	PART NUMBER
SCALE	1:2	
SHEET #	1 OF 1	B2400-B53