

4

3

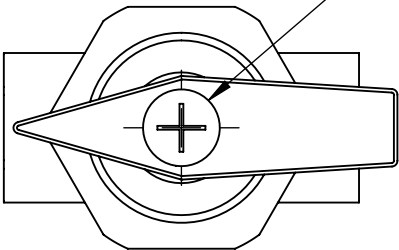
2

1

- NOTES:
- 1. APPLICABLE STANDARDS/SPECIFICATIONS:
ASME Y14.5M-1994, DIMENSIONING AND TOLERANCING
ASME Y14.38-1999, ABBREVIATIONS
 - 2. COMPONENT OR ITEM TO BE COMPLIANT WITH THE MOST
CURRENT REVISION OF THE RoHS / Wee DIRECTIVE FOR
THE REDUCTION OF HAZARDOUS SUBSTANCES AND MATERIALS.
 - 3. MATERIAL: 360 BRASS BODY, HARD CHROME STAINLESS STEEL
BALL WITH BUNA-N SEALS AND PTFE SEATS.
 - 4. ITEMS PLACED IN BAG. BAG IS SEALED AND LABELED.

REV	DATE	EC #	ZONE	DESCRIPTION	DRAWN	CKD
A	2018-09-14			ORIGINATED	MJO	CED
B	2018-11-14	2131		CHANGED SCREW	MJO	CED

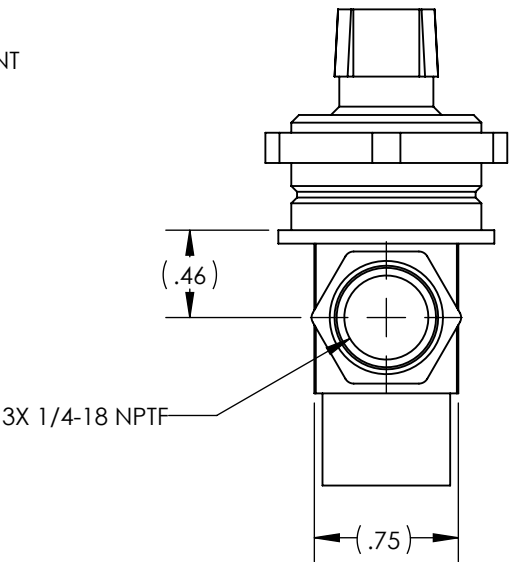
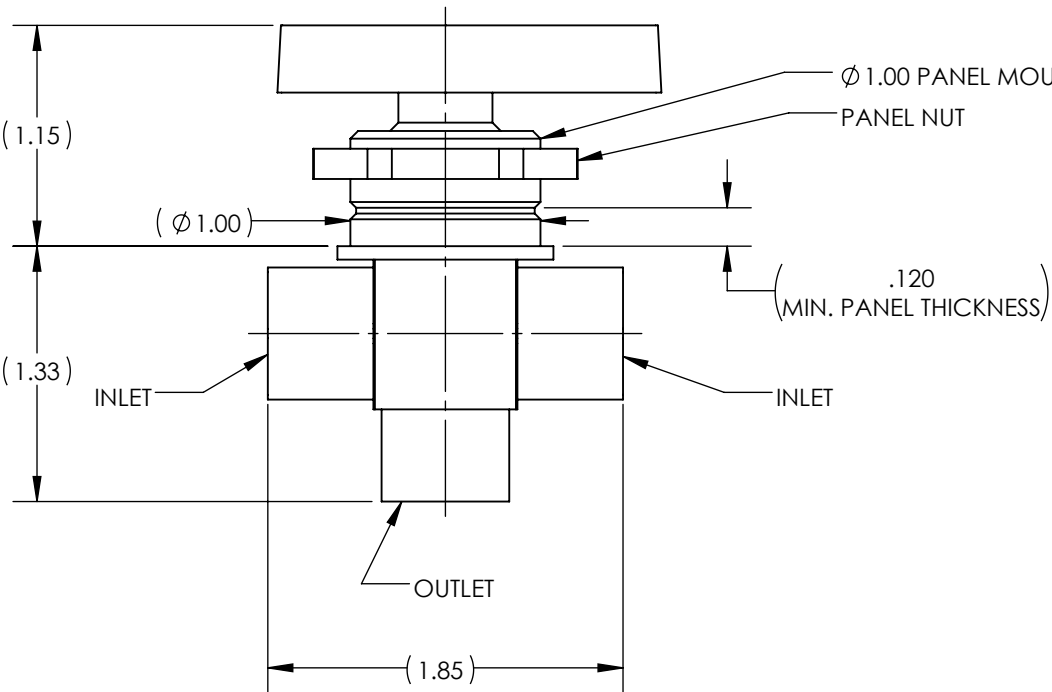
DURING INSTALLATION:
REMOVE AND DISCARD SCREW.
REPLACE WITH SCREW PROVIDED IN KIT.
TORQUE TO 5.0±0.5 IN-LBS.



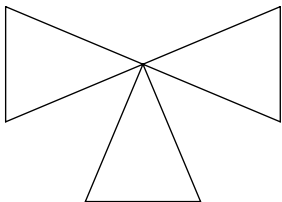
T20 DRIVE



M4X0.7X10MM LG, SHTS.
WITH THREAD PATCH




FLOW SCHEMATIC

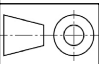


CUSTOMER PRINT

NOTE: PART MUST BE CLEAN AND BURR FREE
MFG TOLERANCES UNLESS OTHERWISE NOTED:
ALL UNITS ARE INCHES
(2) DECIMAL PLACES: ±.01
(3) DECIMAL PLACES: ±.005
ANGLES: ±.5°
BREAK ALL EDGES .005/.015 X 45°
MACHINED SURFACES TO BE 63 RMS
CRITICAL CHARACTERISTIC - CONTROL
PLAN REQUIRED



AIRman
PRODUCTS



Third Angle
Projection

CONFIDENTIAL: THIS DRAWING OR
ANY PART THEREOF IS PROPRIETARY
AND MAY NOT BE REPRODUCED OR
COPIED WITHOUT WRITTEN CONSENT
OF AIRMAN PRODUCTS

DRAWN BY	MJO	DESCRIPTION
DRAWN DATE	09-18-18	BV, 3 WAY, 1" PNL MT WITH PATCHED SCR
DRAWING SIZE	B	
MATERIAL	SEE NOTES	PART NUMBER
SCALE	1:1	K1100-330
SHEET #	1 OF 1	