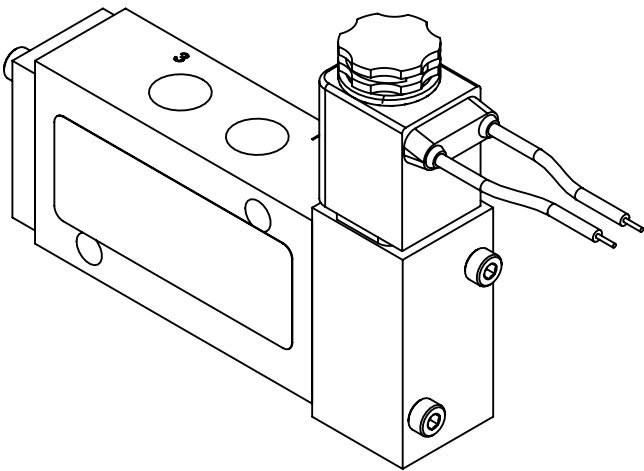
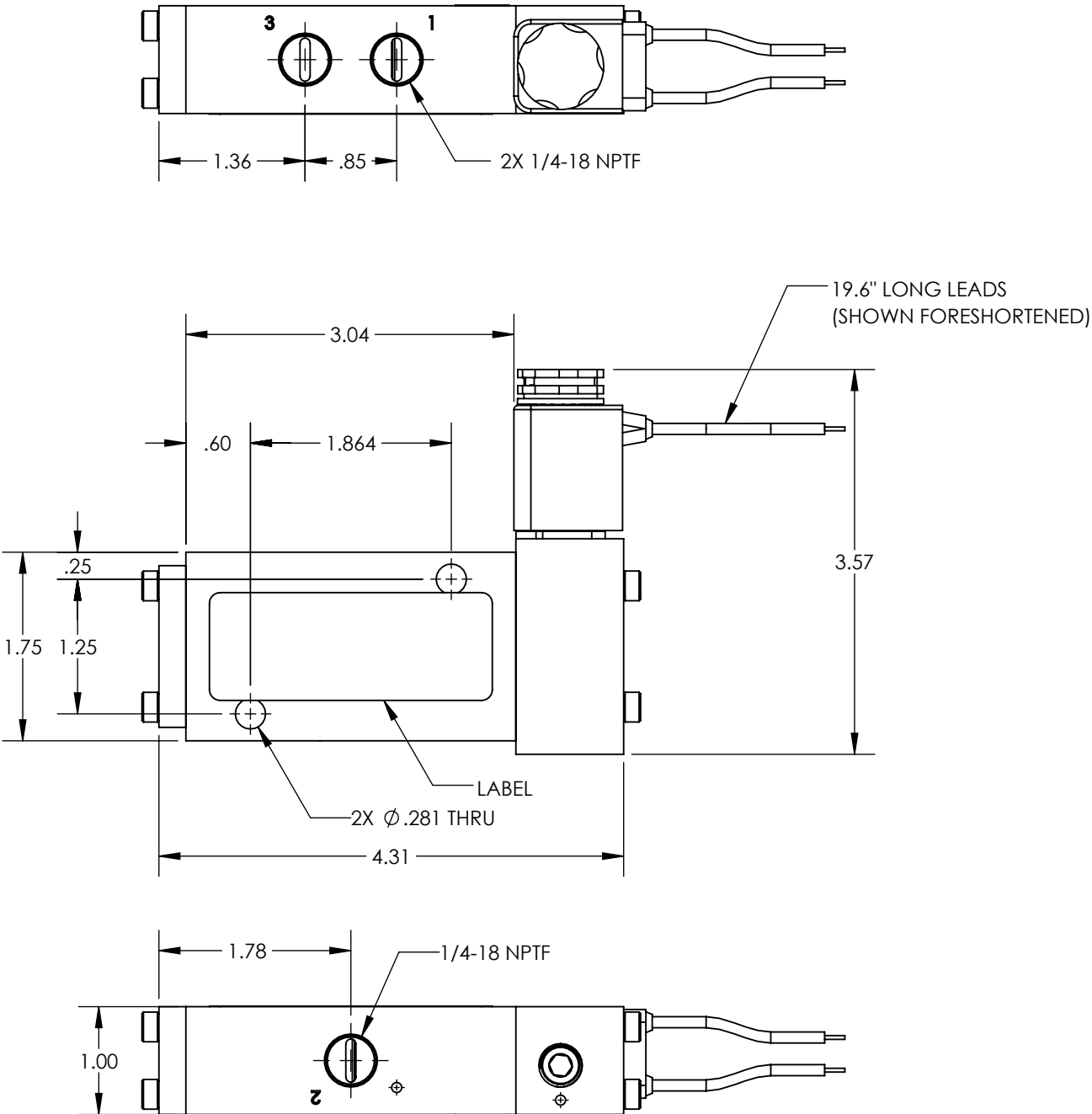


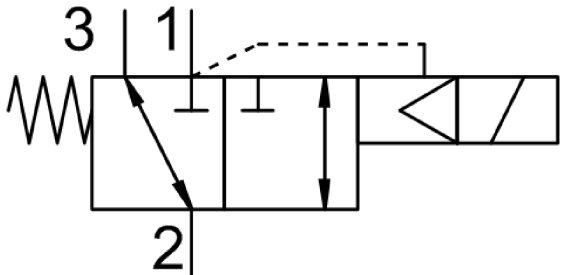
- NOTES:
1. APPLICABLE STANDARDS/SPECIFICATIONS:  
ASME Y14.5M-1994, DIMENSIONING AND TOLERANCING  
ASME Y14.38-1999, ABBREVIATIONS
  2. COMPONENT OR ITEM TO BE COMPLIANT WITH THE MOST  
CURRENT REVISION OF THE RoHS / Wee DIRECTIVE FOR  
THE REDUCTION OF HAZARDOUS SUBSTANCES AND  
MATERIALS.
  3. ALL DIMENSIONS ARE FOR REFERENCE ONLY.
  4. TABLE PRINT: USE CHART ASSOCIATED WITH AIRMAN  
ASSEMBLY PART NUMBER. SUFFIXES (EXAMPLES -CLR AND -  
BLK) ATTACHED TO THE END OF THE AIRMAN PART NUMBER  
WILL INDICATE THE ANODIZATION COLOR (IF APPLICABLE)  
ITEM INDIVIDUALLY SEALED IN BAG.
  - 5.

REV	DATE	EC #	ZONE	DESCRIPTION	DRAWN	CKD
A	2019-11-19			ORIGINATED	NR	CED
B	2020-09-08	2222		ADDED BAG	NR	



FUNCTION	3/2 INTERNAL SUPPLIED SOLENOID SPRING RESET
MECHANICAL MATERIALS	ALUMINUM BODY & END CAP
SEALS	LOW TEMP. NITRILE, LOW COMP. SET POLYURETHANE
FASTENERS	STAINLESS STEEL
MTG STYLE	BODY SIDE
ASSY LUBRICATION	HEAVY TRANSPORT SILICONE
FLOW	1.5 Cv
TEMP	-40 TO 180°F
FILTRATION	40 MICRON
SYSTEM LUBRICATION REQ'D	N/A
PRESSURE RANGE	MIN: 55 psi MAX: 150 psi
LEAK	N/A
ELECTRICAL VOLTAGE	12 VDC
CURRENT	5 WATT, FLYING LEADS

## CUSTOMER PRINT



AIRman PART NUMBER CHART	
AIRman PART NUMBER	ANODIZATION COLOR
V2516R0523-DAL	NON-ANODIZED
V2516R0523-DAL-BLK	BLACK-ANODIZED
V2516R0523-DAL-CLR	CLEAR-ANODIZED

NOTE: PART MUST BE CLEAN AND BURR FREE  
MFG TOLERANCES UNLESS OTHERWISE NOTED:  
ALL UNITS ARE INCHES  
(2) DECIMAL PLACES: ±.01  
(3) DECIMAL PLACES: ±.005  
ANGLES: ±.5°  
BREAK ALL EDGES .005/.015 X 45°  
MACHINED SURFACES TO BE 63 RMS  
CRITICAL CHARACTERISTIC - CONTROL  
PLAN REQUIRED

**AIRman**  
PRODUCTS

Third Angle  
Projection

CONFIDENTIAL: THIS DRAWING OR  
ANY PART THEREOF IS PROPRIETARY  
AND MAY NOT BE REPRODUCED OR  
COPIED WITHOUT WRITTEN CONSENT  
OF AIRMAN PRODUCTS

DRAWN BY	NR	DESCRIPTION
DRAWN DATE	2019-11-19	VALVE, .25 NPT, 3-2, SOL-SR, 12DC
DRAWING SIZE	B	
MATERIAL	SEE NOTES	PART NUMBER
SCALE	2:3	
SHEET #	1 OF 1	V2516R0523-DAL